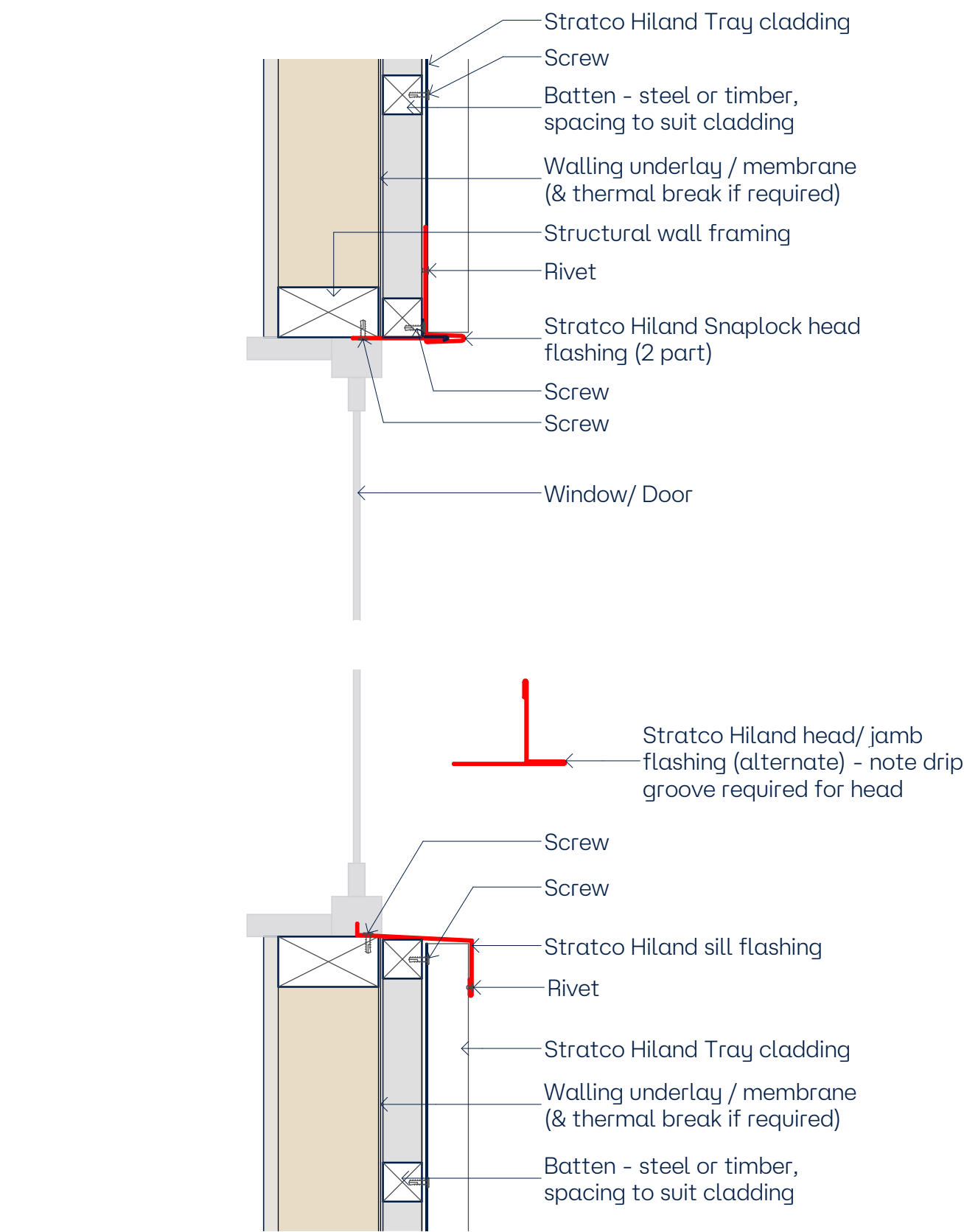
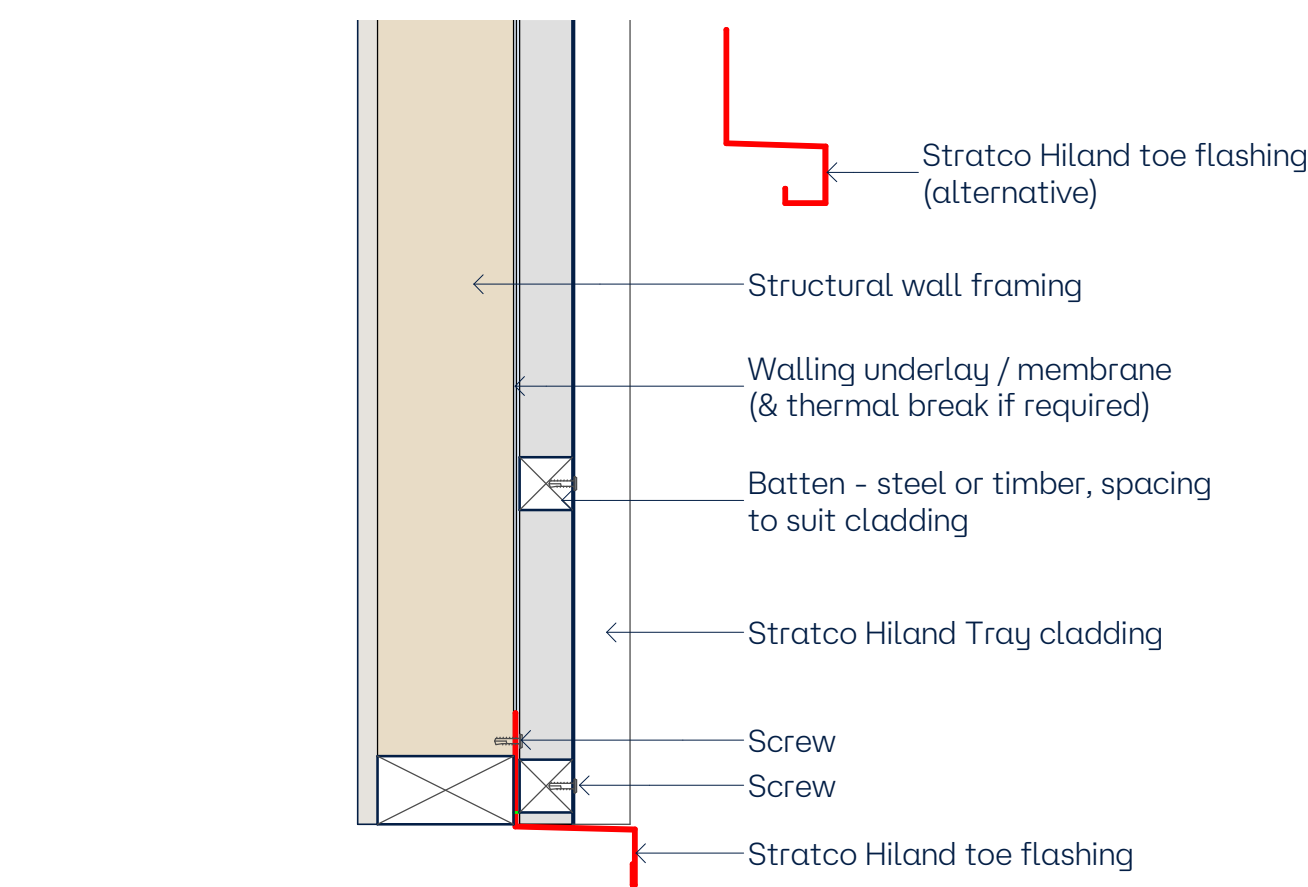


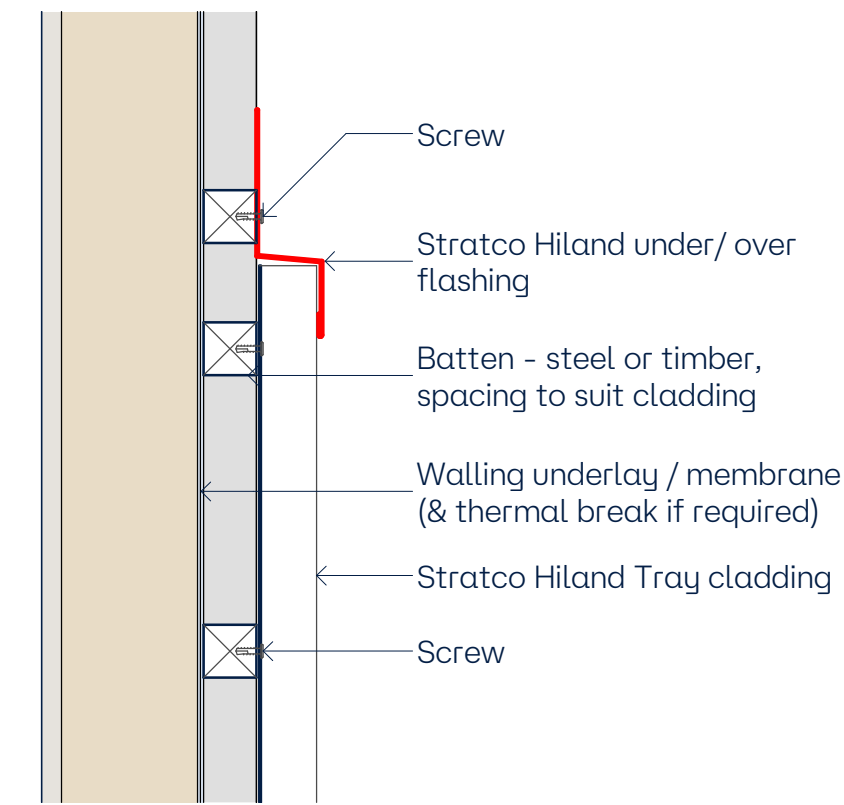
2 Hiland Snaplock Parapet
1:5



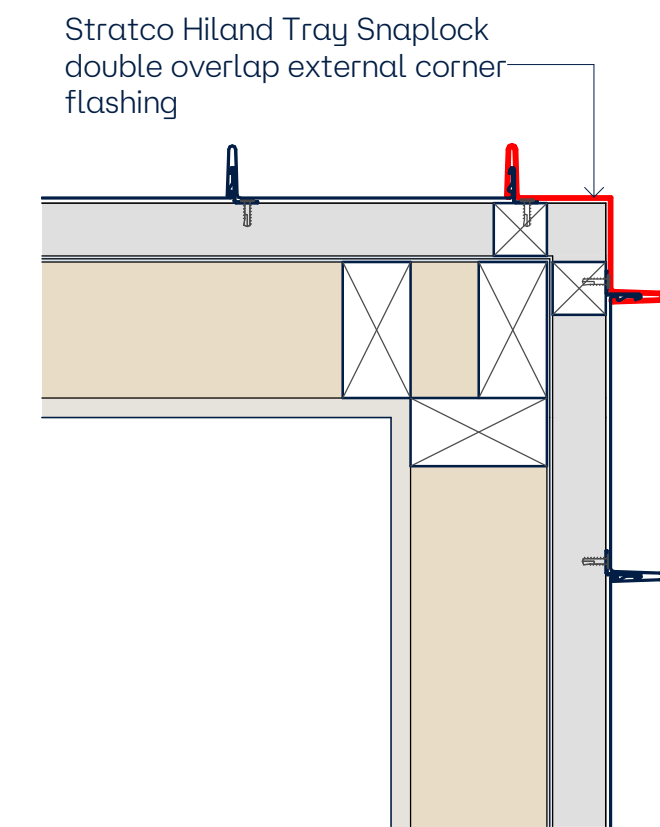
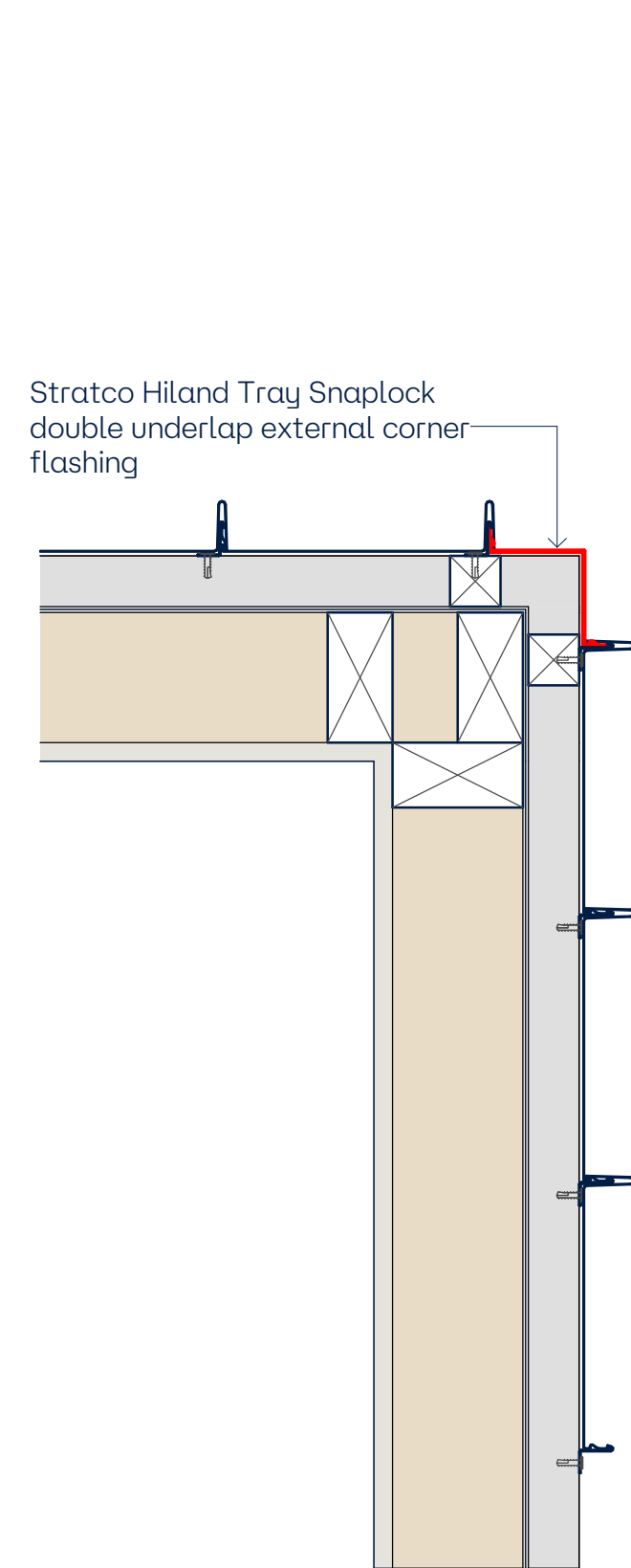
4 Hiland Snaplock Opening Head & Sill
1:5



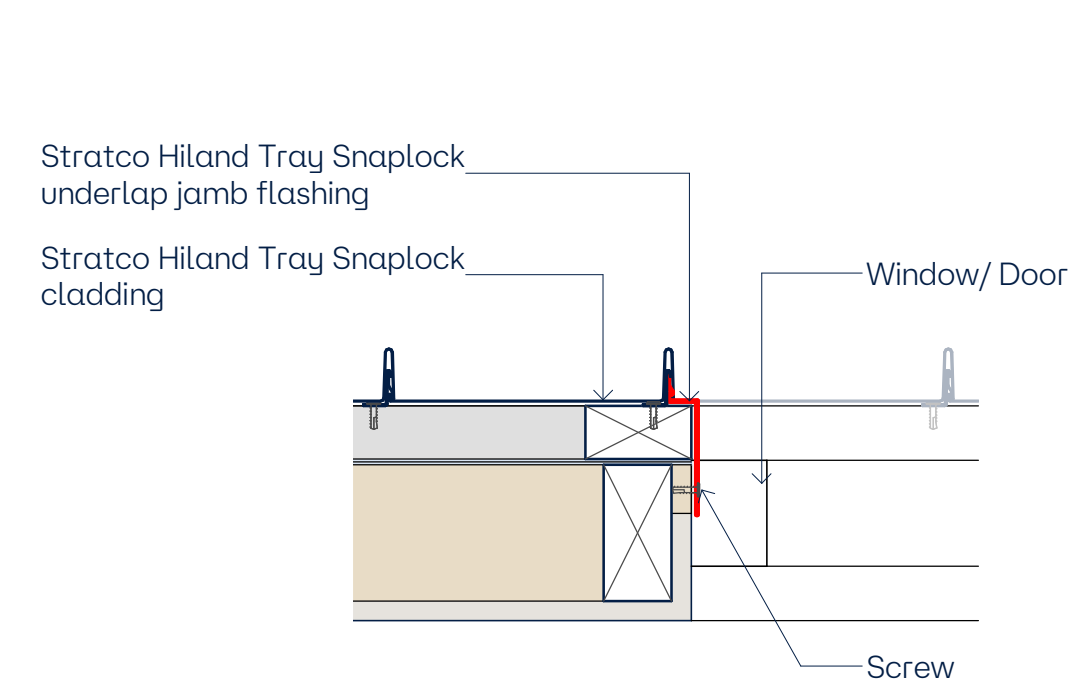
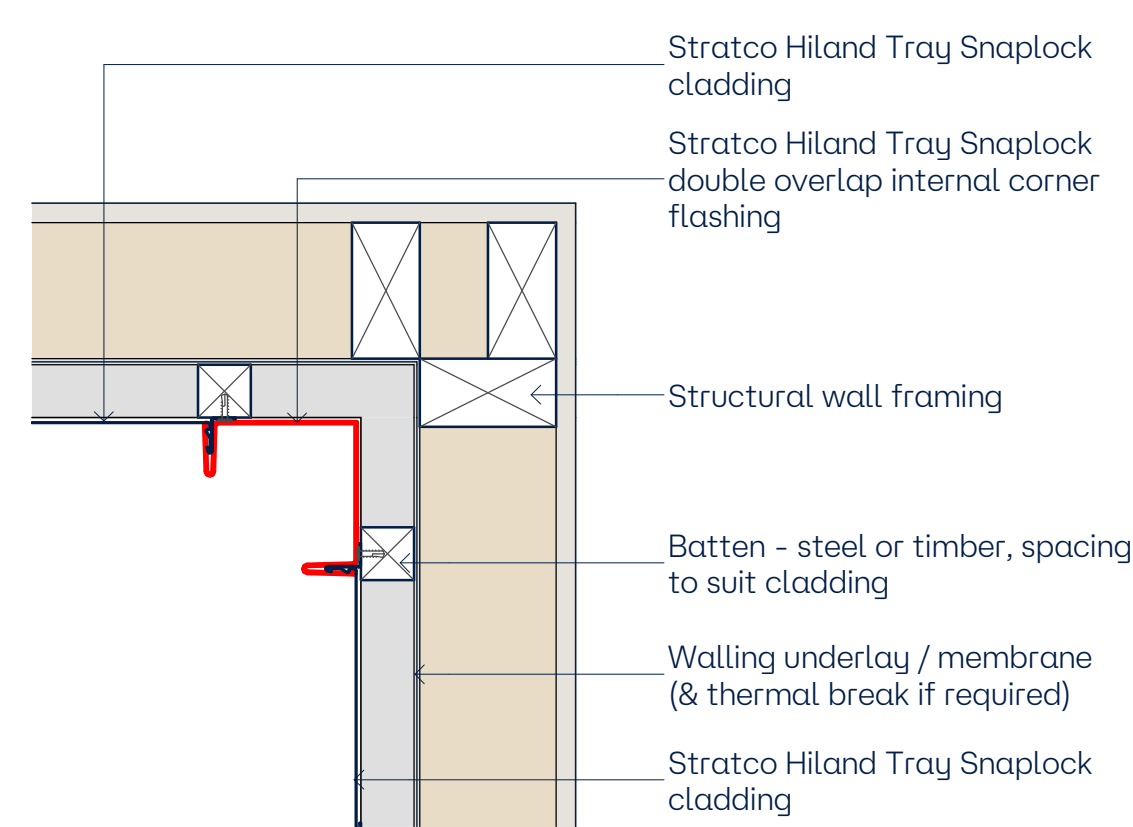
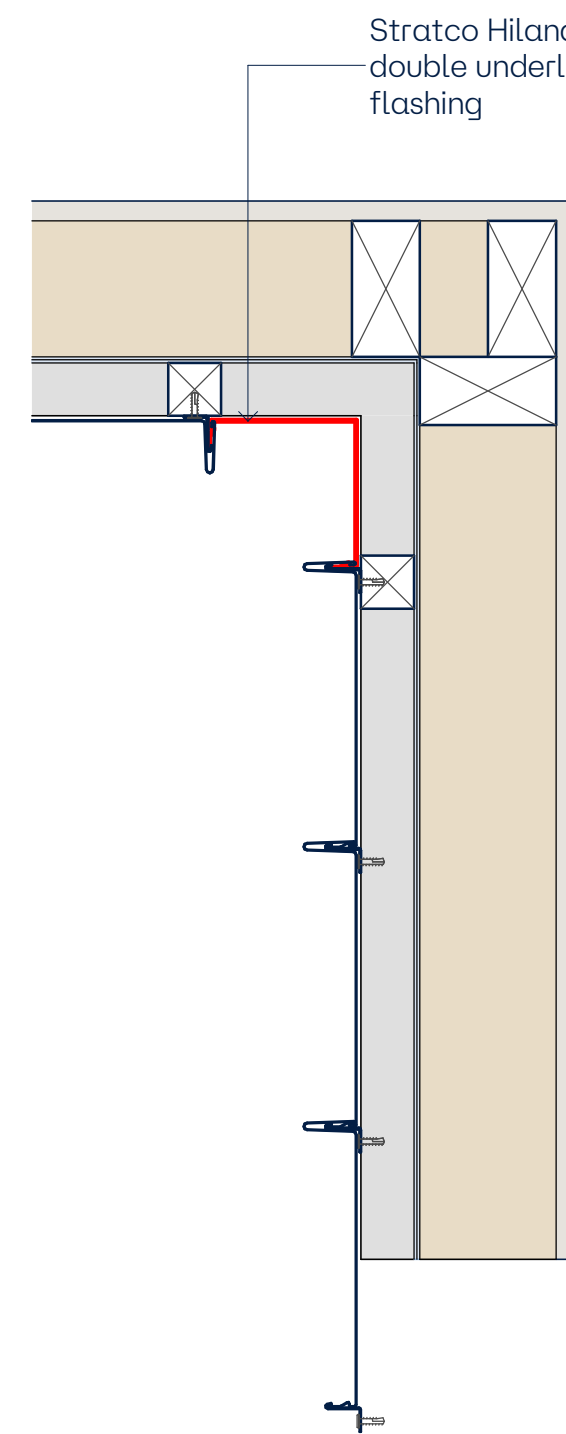
1 Hiland Snaplock Toe
1:5



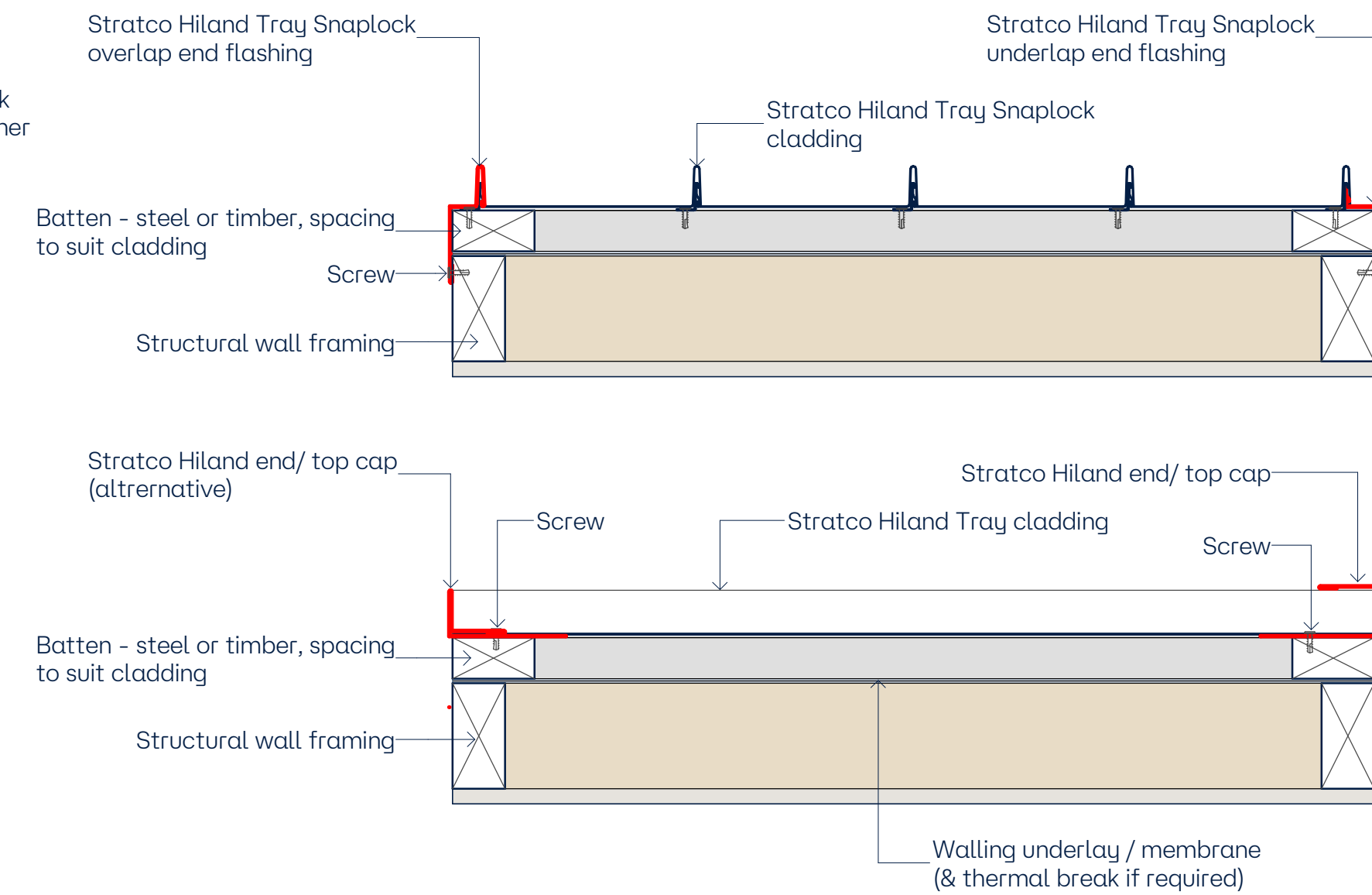
3 Hiland Snaplock Under/ Over Flashing
1:5



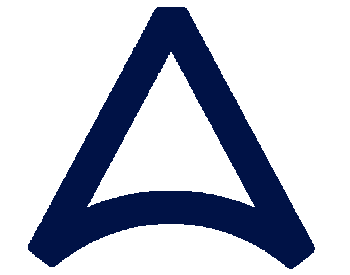
5 Detail Flashings - Hiland Snaplock Corner
1:5



7 Detail Flashings - Hiland Snaplock Jambs
1:5



6 Detail Flashings - Hiland Snaplock End Caps
1:5



STRATCO
ARCHITECTURAL
SOLUTIONS

www.stratco-arc.com.au

Head Office:
125 Cavan Road,
Gepps Cross SA 5074
T. 1300 288 598
E. info@stratco-arc.com.au

Online Enquiries:
<https://stratco-arc.com.au/enquiries/>

This document is to be used in conjunction with all other published information provided by the manufacturer (Stratco) including but not limited to;

- General Design Guides
- Product Specific Design Guides
- Selection, Use & Maintenance Guides

Suggested flashings and substrate details are a guide only.
It is responsibility of the designer & installer to assure compliance with Australian Standards and National Construction Code.

No.	Description	Date
A	-	30.10.2024
1	Issued for distribution/ customer use	31.10.2024
2	Issued for distribution/ customer use	19.11.2024

Stratco Hiland Details

2D Construction Details - Hiland Snaplock 2

Project number	0001
Date	31.10.2024
Drawn by	ASc
Checked by	EL
	008
Scale	1:5