

# NINELINE



## DESIGN GUIDE

### NINELINE™ Box

This profile provides a geometric rendition of a conventional corrugated profile. Alternatively, it provides an extreme interpretation of a batten application, with a 90mm rib height.



**STRATCO**  
ARCHITECTURAL  
SOLUTIONS

# NINELINE™ Box

Due to its boxy shape, this profile provides superior strength alongside enduring style. It is suitable for all residential and commercial application.

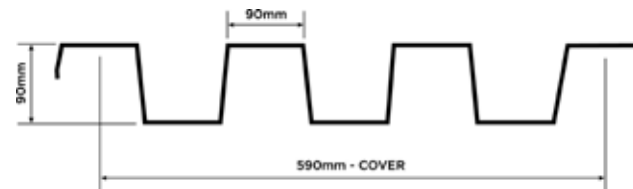
# NINELINE

Others in the Design Guide Library

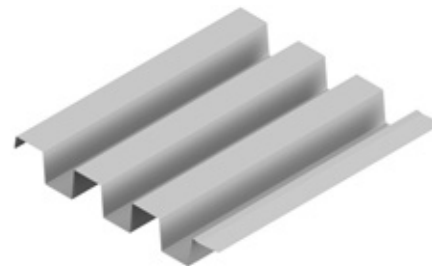
- NINELINE™ Batten
- NINELINE™ Pleat



PROFILE SPECIFICATIONS	
Depth	90mm
Cover	590mm
Longest Length	6.0m
Minimum Length	0.3m



MATERIAL SPECIFICATIONS		
Base Metal Thickness (mm)	0.55mm	
Tensile Strength	G300	Coating
COLORBOND® Finishes available	Standard XRW	AM100
	ULTRA	AM150
	Metallic	AM100
	Matt Finish	AM100
	Stratco Bronze	AM100



WALL CLADDING - PAN FIXING	
All screws must have a neoprene washer for a weather tight seal	
	<b>Fasteners required per support:</b>
	3

For spans exceeding 1500mm, secure each overlap mid-span with 3.2mm Rivets (rivets to be sealed to prevent water penetration).

Fastener required per Internal Span:	
<b>1.0m span</b>	<b>1.5m span</b>
12 per m2	6 per m2

Fixing	Steel 1.0mm	Contour Head 12-14 × 30 Self Drilling with Seal
	Timber	Hex Head 12-11 × 25 T17 Self Drilling with Seal

DESIGN PRESSURES (KPA)		
Span (mm)	Serviceability	Strength
	End/Internal	End/Internal
900	4.75	8.24
1200	3.73	5.34
1500	3.10	3.81
1800	2.66	2.90
2100	2.30	2.30
2400	1.88	1.88
2700	1.57	1.57
3000	1.34	1.34
3300	1.16	1.16
3600	1.02	1.02

These values are for use with steel supports with a minimum thickness of 1.0mm BMT G550

## DESIGN CRITERIA - WALLING

Design criteria determined in accordance with AS/NZS 1170.2:2021 Wind Actions.

The following criteria were used in the development of the tables:

- Region A & B with a design return period of 500 years for Strength Limit State and 25 years for Serviceability Limit State.

Pressure Coefficients for Walling of Enclosed Building:

- Internal,  $C_{p,i} = +0.2$
- External,  $C_{p,e} = -0.65$

Topographic influence has not been considered ( $M_t=1.0$ ) and spans are based on no shielding ( $M_s=1.0$ ).

Refer AS/NZS 1170.2 for definition of local pressure (Kl) zones. Kl=3.0 is only applicable for buildings with an aspect ratio greater than 1.0. Aspect ratio defined as the average building height divided by the smaller of building length and width.

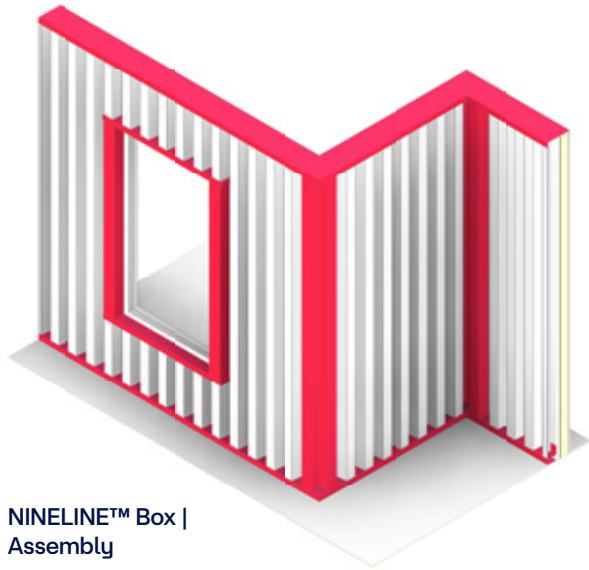
Additional engineering advice can be obtained from Stratco if any design parameters vary from those indicated above.

MAXIMUM ALLOWABLE SPANS (mm)															
Terrain Category	Kl	3m Maximum Height				Kl	5m Maximum Height				Kl	10m Maximum Height			
		Region A0-A5		Region B1			Region A0-A5		Region B1			Region A0-A5		Region B1	
		End	Internal	End	Internal		End	Internal	End	Internal		End	Internal	End	Internal
1.0	1.0	2520	3600	1770	2540	1.0	2450	3510	1680	2410	1.0	2240	3210	1540	2200
	1.5	2090	2990	1430	2050	1.5	1980	2830	1350	1940	1.5	1810	2590	1230	1770
	2.0	1770	2540	1210	1740	2.0	1680	2410	1150	1650	2.0	1540	2200	1050	1510
	3.0	1400	2000	950	1370	3.0	1330	1900	910	1300	3.0	1210	1740	830	1190
2.0	1.0	2520	3600	1930	2760	1.0	2520	3600	1930	2760	1.0	2490	3560	1700	2440
	1.5	2270	3250	1560	2230	1.5	2270	3250	1560	2230	1.5	2000	2870	1370	1970
	2.0	1930	2770	1320	1890	2.0	1930	2770	1320	1890	2.0	1700	2440	1160	1670
	3.0	1520	2180	1040	1490	3.0	1520	2180	1040	1490	3.0	1340	1920	920	1320
2.5	1.0	2520	3600	2050	2930	1.0	2520	3600	2050	2930	1.0	2520	3600	1900	2720
	1.5	2410	3450	1650	2370	1.5	2410	3450	1650	2370	1.5	2240	3210	1540	2200
	2.0	2050	2940	1400	2010	2.0	2050	2940	1400	2010	2.0	1910	2730	1300	1870
	3.0	1610	2310	1100	1580	3.0	1610	2310	1100	1580	3.0	1500	2150	1020	1470
3.0	1.0	2520	3600	2180	3120	1.0	2520	3600	2180	3120	1.0	2520	3600	2180	3120
	1.5	2520	3600	1760	2520	1.5	2520	3600	1760	2520	1.5	2520	3600	1760	2520
	2.0	2190	3130	1490	2140	2.0	2190	3130	1490	2140	2.0	2190	3130	1490	2140
	3.0	1720	2460	1180	1690	3.0	1720	2460	1180	1690	3.0	1720	2460	1180	1690

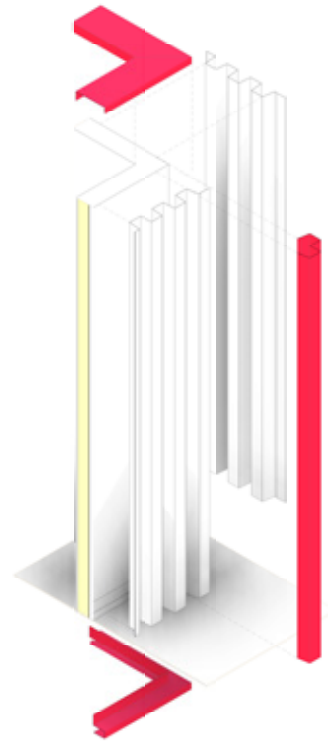
Note 1: All end spans shall not exceed 70% of the maximum allowable internal span.  
 Note 2: For Region A0, utilise Terrain Category 2.0 in all terrains (i.e. T.C. 2.0 throughout).

# NINELINE™ Box

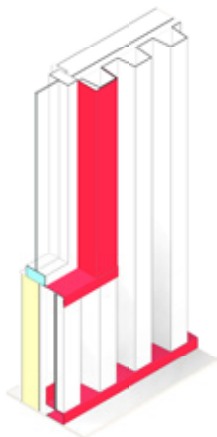
## INDICATIVE INSTALLATION DETAILS



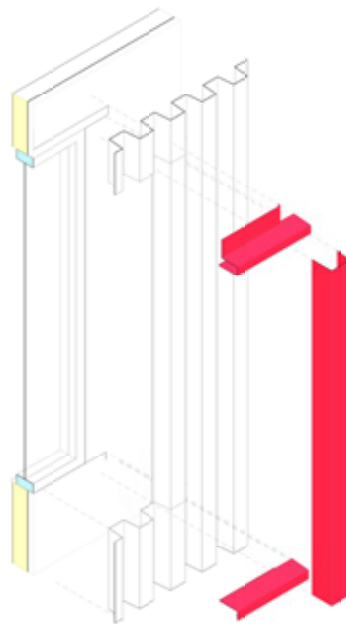
NINELINE™ Box |  
Assembly



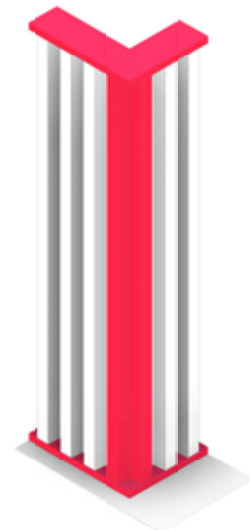
NINELINE™ Box |  
Ext Corner Assembly



NINELINE™ Box |  
Window Jamb



NINELINE™ Box |  
Window Head & Sill



NINELINE™ Box |  
Ext Corner



1300 155 155 | [stratco.com.au](https://stratco.com.au)

Scan this QR code to



find a Stratco near you.

All brand names, images accompanied by © or ™ remain the property of Stratco Australia.