



ARCHITECTURAL  
SOLUTIONS

**NINELINE**

Architectural  
Wall Cladding



**NINELINE™ Batten**

 **STRATCO**



## NINELINE™ Batten

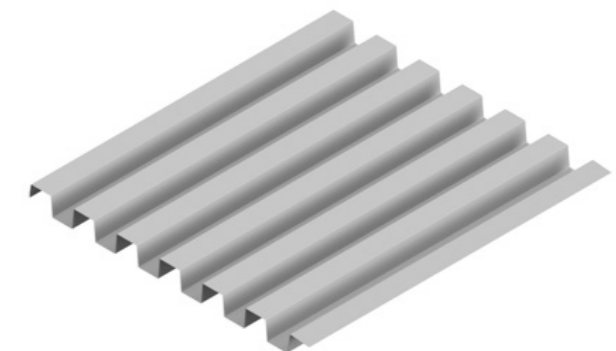
### Achieve the visual of a repeated batten system through a single integrated product.

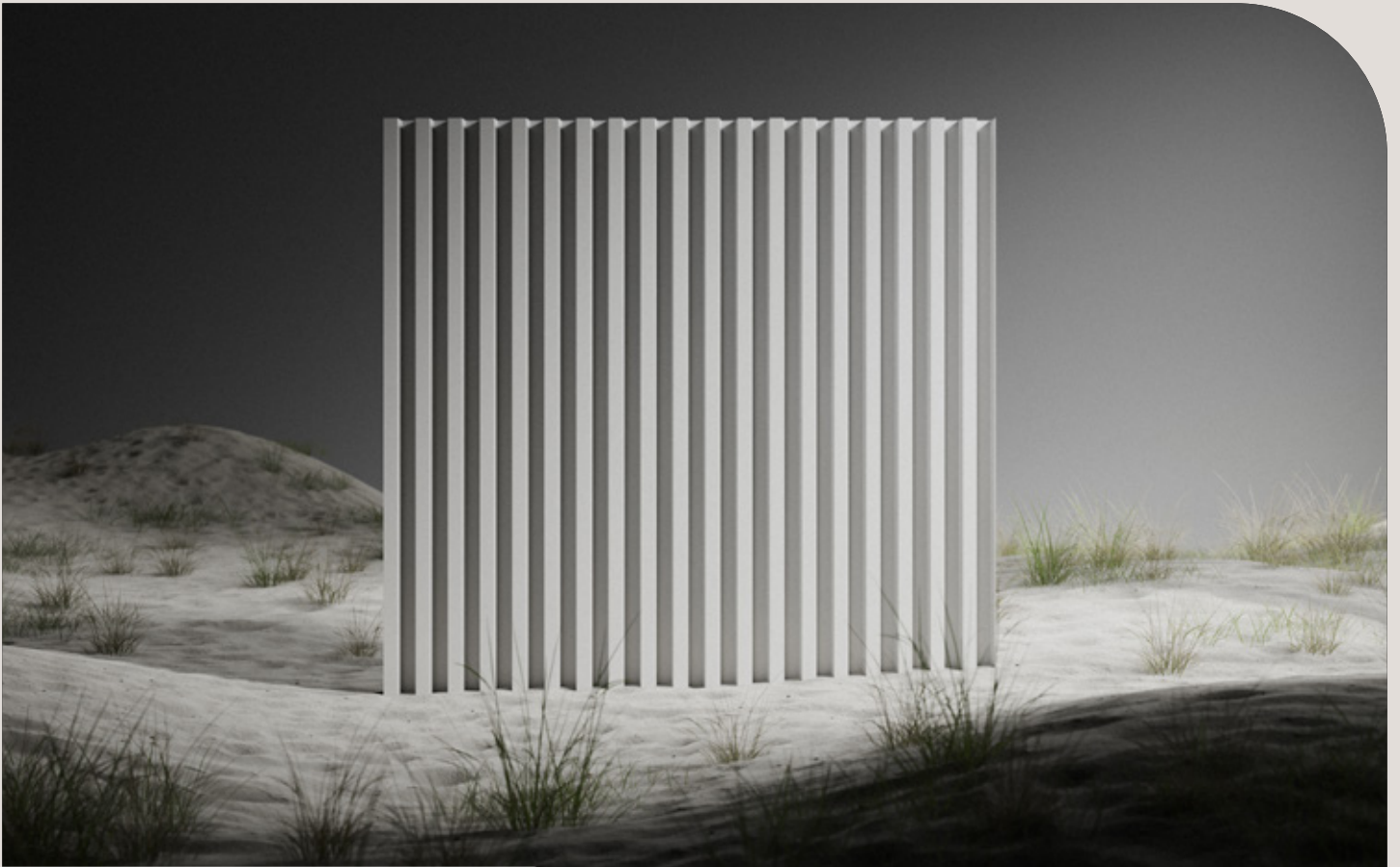
With its 45mm rib height and bold lines, Batten's application will prove versatile as the profile sits comfortably in both commercial and residential architecture.

Typically to achieve this aesthetic, a combination of multiple products are partnered to create the same appearance: Batten does this in one product. As a result of the clever design, multiple benefits are realised such as : reduced installation time, improved building lifecycle costs and ongoing maintenance.

#### Features at a glance:

- Rib Height: 45mm
- Coverage: 642mm
- BMT: 0.55mm
- Fixing Method: Pierced Fix
- Maximum Length: 6.0m
- Minimum Length: 0.3m
- Available in Colorbond® Standard, Matt Finish, ULTRA, Metallic and Stratco Bronze.





## NINELINE™ Batten

### TECHNICAL INFORMATION:

For all specification and detailing information scan the QR code.



### APPLICATION:

- Wall Cladding
  - External and internal use



1300 155 155 | [stratco.com.au](https://stratco.com.au)

Scan this QR code to



find a Stratco near you.



The information contained within this brochure is for general use and information only. Stratco Australia recommends that you obtain appropriate expert advice confirming the suitability of product(s) and information in relation to the proposed application.

All brand names, images accompanied by © or ™ remain the property of Stratco Australia.